

## Qwest Choice TV gateway and TiVo setup instructions

Connect the TiVo box with the Qwest Choice TV gateway using one of the wiring configurations at the end of this document. Turn on TV and select the proper input:

- 1) Composite cable setup - select Video 1
- 2) Coax cable setup - tune to channel 3 or 4

These instructions provide screen by screen steps using TiVo's remote control:

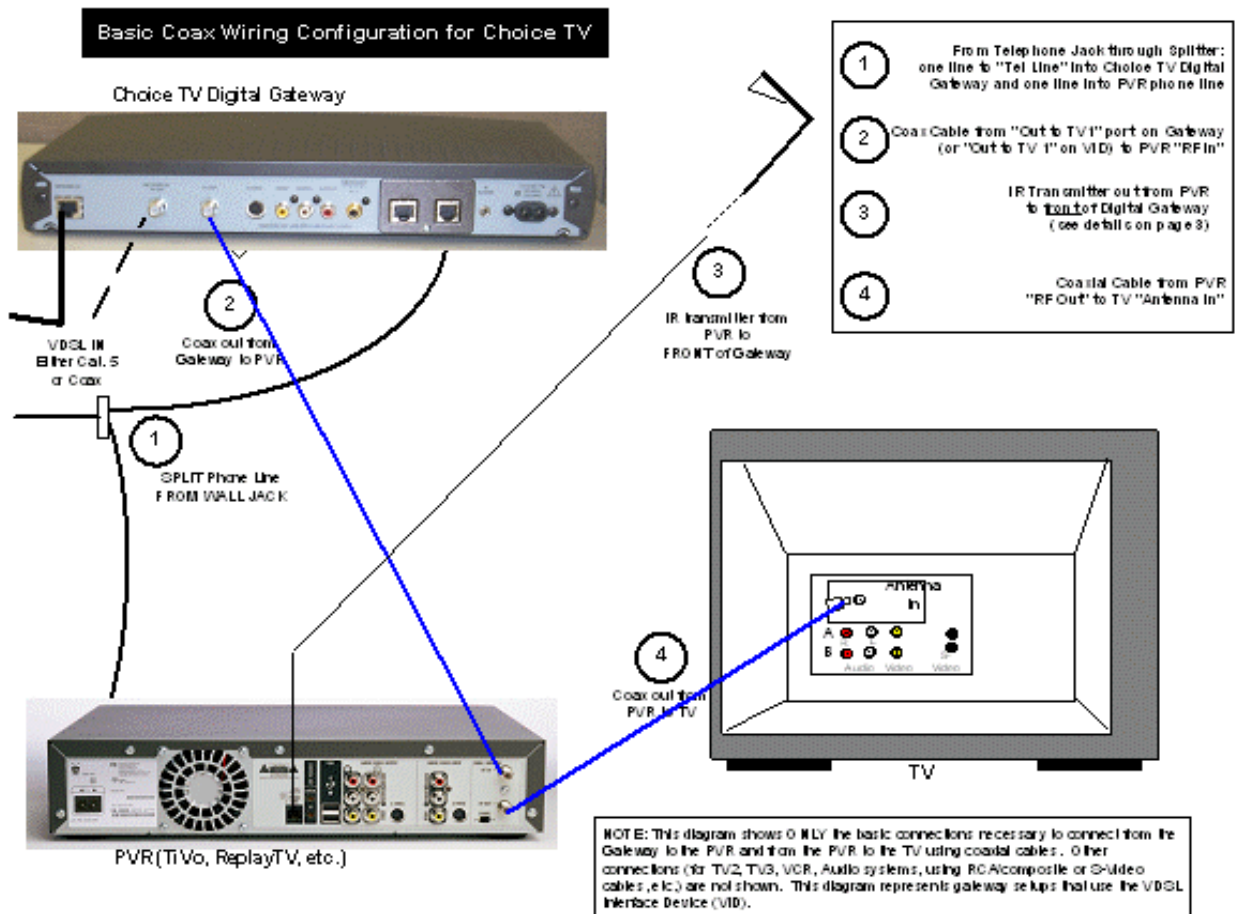
1. **Welcome** - press **Select** to begin guided setup (if this is not the first time setup you may be able to skip this step and proceed to the next step).
2. **Guided Setup** - press **Select** (or the right arrow button).
3. **Service Terms** - highlight **I agree to the service terms** and press **Select**.
4. **Activate Your Service** - first time setup only; if previously setup service, skip this step. Upon activating the TiVo service using the Internet or phone option, press **Select** (or the right arrow button). Account activation with TiVo may take up to a couple of hours.
5. **Zip Code** - enter Zip code using key pad and press **Select** (or the right arrow button).
6. **TV Programming Source** - highlight **Cable** and press **Select** (or the right arrow button).
7. **TiVo Service Connection** - highlight **Internet** and press **Select** (or the right arrow button). If you are setting up for the first time, a confirmation screen will display. If you are setting up for the second or third time, an IP Address screen will display. Press **Select** (or the right arrow button).
8. **Begin Network Connection** - press **Select** (or the right arrow button).
9. **Getting Setup Info** - as the TiVo setup progresses, you will see the indicator to the left move down to each function, once finished, press **Select** (or the right arrow button).
10. **Selecting Cable Box** - highlight **Yes** and press **Select** (or the right arrow button).
11. **Digital Cable?** - highlight **Yes** and press **Select** (or the right arrow button).
12. **Enable Dual Tuner?** - highlight **No, I do not want to enable dual tuner** and press **Select** (or the right arrow button).
13. **Are You Sure?** - highlight **Yes, I'm sure** and press **Select** (or the right arrow button).
14. **Cable Provider** - highlight **Qwest Choice TV** and press **Select** (or the right arrow button).
15. **Cable Channel Lineup** - press **Select** (or the right arrow button).
16. **What's on Channel 28** - for Phoenix and Denver Choice TV customers, highlight **ESPN** and press **Select** (or the right arrow button).
17. **Premium Channels?** - highlight **Yes** and press **Select** (or the right arrow button).
18. **Premium Channel List** - press **Select** on each premium channel you receive, then use the right arrow button to highlight **Done** and press **Select**.
19. **Cable Channels** - press **Select** (or the right arrow button).
20. **Do You See Video** - if you see video in background, highlight **Yes** and press **Select** (or the right arrow button).
21. **Cable Box Brand** - highlight **Other** and press **Select** (Note: do not select Motorola). When you get to 2<sup>nd</sup> screen, highlight **Qwest** then press **Select** (or the right arrow button). If you reside in RidgeGate, Daybreak or Windbreak, you will select **Scientific Atlanta**.
22. **Confirm IR Hookup** - highlight **OK** after IR emitters are hooked up and press **Select** (or the right arrow button).
23. **Cable Channel Digits** - highlight **5** (if you reside in RidgeGate, Daybreak or Windbreak highlight 005) and press **Select** (or the right arrow button).
24. **Cable Enter Button** - highlight **No** and press **Select** (or the right arrow button).
25. **Channel Changing Test** - press **Select** (or the right arrow button).
26. **Begin First Test** - press **Select** (or the right arrow button). The next screens will go over tests, highlight **The channel changed** and press **Select** (or the right arrow button), or **Nothing Happened** and continue until all tests are completed.

27. **Begin Network Connection** - press **Select** (or the right arrow button).
28. **Getting Program Info** - (completes in 10-15 minutes with a broadband connection) and press **Select** (or the right arrow button).
29. **Program Info Received** - press **Select** (or the right arrow button).
30. **Congratulations** - press the **"TIVO"** button at the top of remote to begin using the service.

## WIRING CONFIGURATIONS

Basic Wiring setup using coax cable and phone line

### Basic Wiring Diagram



Note: This connection will also be used if connecting to a Choice TV High Definition gateway (RG3000). The RG3000 uses the video component connections along with the audio composite connections directly to the TV or home theater receiver.

## Composite Wiring Diagram / Data Network Connection

